



# LEARN 10 Reptiles & Amphibians of Chelan County

*Wenatchee Naturalist* Course

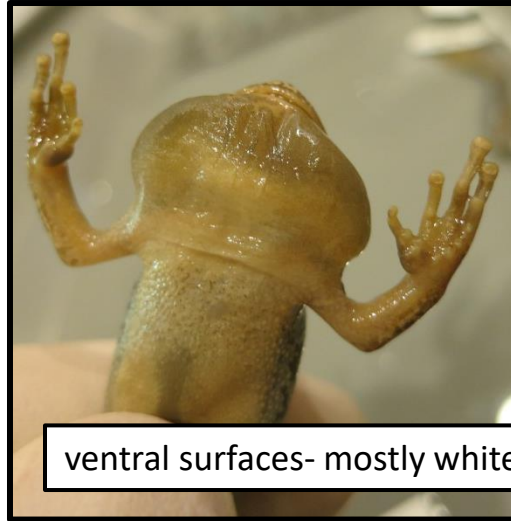
Text and photos by Susan Ballinger. Additional  
credited photos generously provided by Rod Gilbert,  
Lisa Robinson, Dave Hillstad, and John Sullivan at  
<http://www.wildherps.com/>

***Pseudacris regilla* Northern Pacific tree frog** Key ID features: small, somewhat flattened body, narrow waist, long legs, smooth skin, pointed snout. Adults <2 inches long. COLOR: dorsal body variable-green to brown or combination.

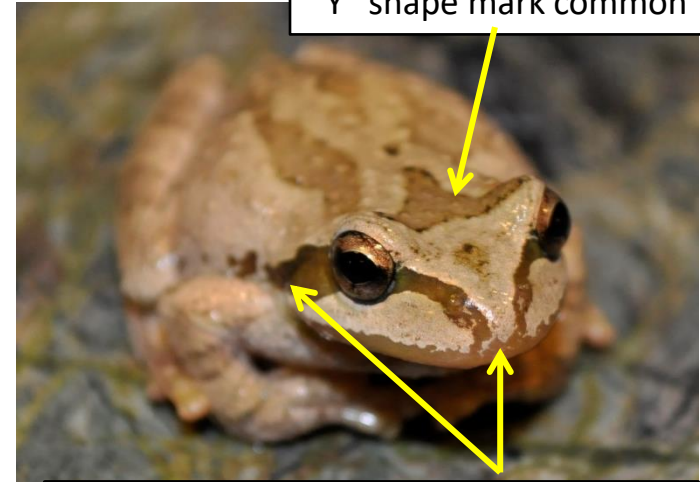


Adult length: up to 2 inches

Tips of toes have sticky, broaden circular discs that adhere well to smooth surfaces



ventral surfaces- mostly white

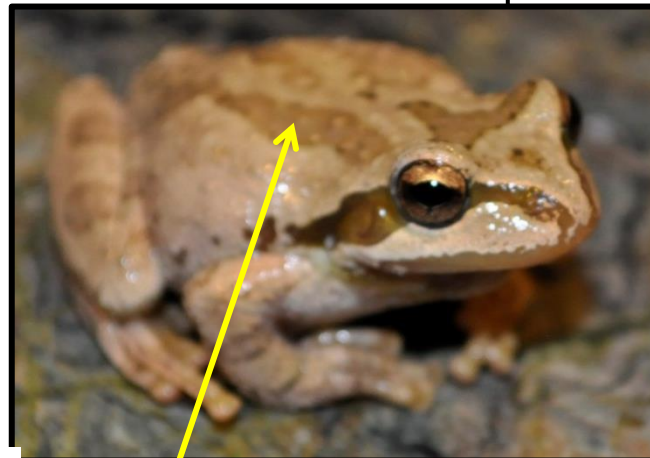


"Y" shape mark common

Conspicuous dark mask from tip of nose through eye to shoulder



Varies in color; depends upon food source



Often, 2-3 stripes down back, may be discontinuous or absent

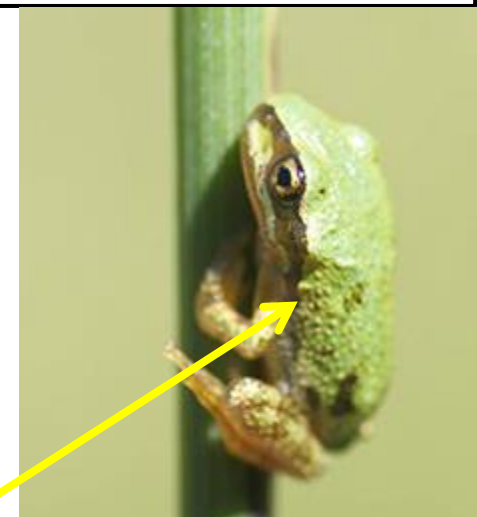


Photo John Sullivan <http://www.wildherps.com>

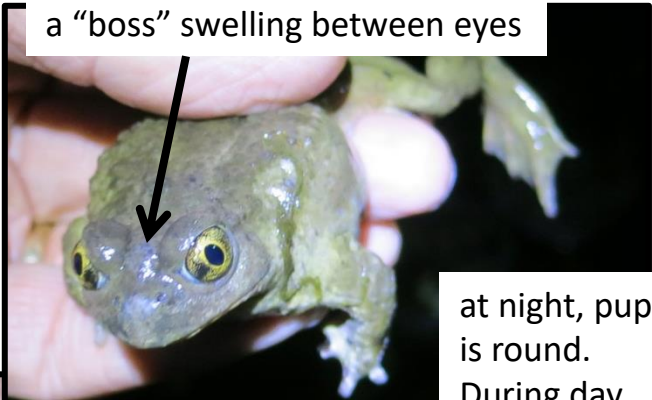


***Spea intermontana*** (formerly *Scaphiopus intermontanus*) **Great Basin spadefoot (toad)**

Key ID features: Has a sharp-edged, black horny spade on inside of hind feet-for digging. Uses alternating circular motions of 2 hind feet to push dirt out from under itself, and then over its sides and back. Active at night. Habitat: shrub-steppe, usually a variety of aquatic habitats for breeding.



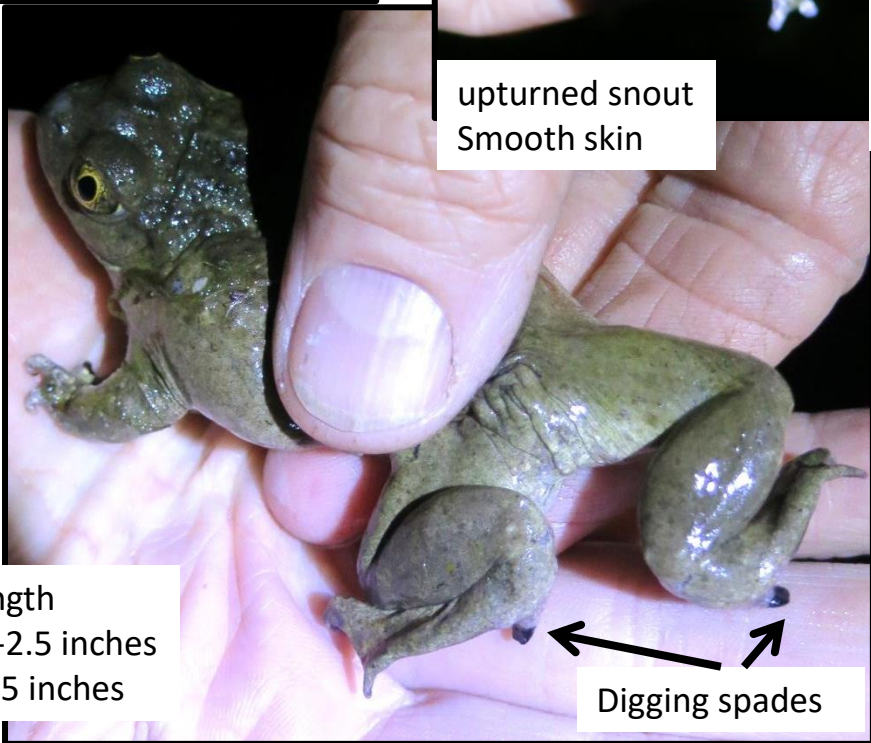
plump body,  
broad waist  
Short legs



a "boss" swelling between eyes

at night, pupil  
is round.  
During day,  
pupil is  
vertical

upturned snout  
Smooth skin



Adult length  
Females-2.5 inches  
Males-2.5 inches

Digging spades





***Anaxyrus boreas* (formerly *Bufo boreas*) Western toad:** stout body, blunt head, broad waist, short legs, dry warty skin. **Color** Dorsal- Varies from gray to red-brown to yellow to olive-green. Ventral-pale, mottled with dark blotches. Oval shaped parotoid glands



White-creamy stripe down center back

Photo: Lisa Robinson

Size: Up to 4.5-5 inches in length



2 Photos: John Sullivan Photo: John Sullivan <http://www.wildherps.com>

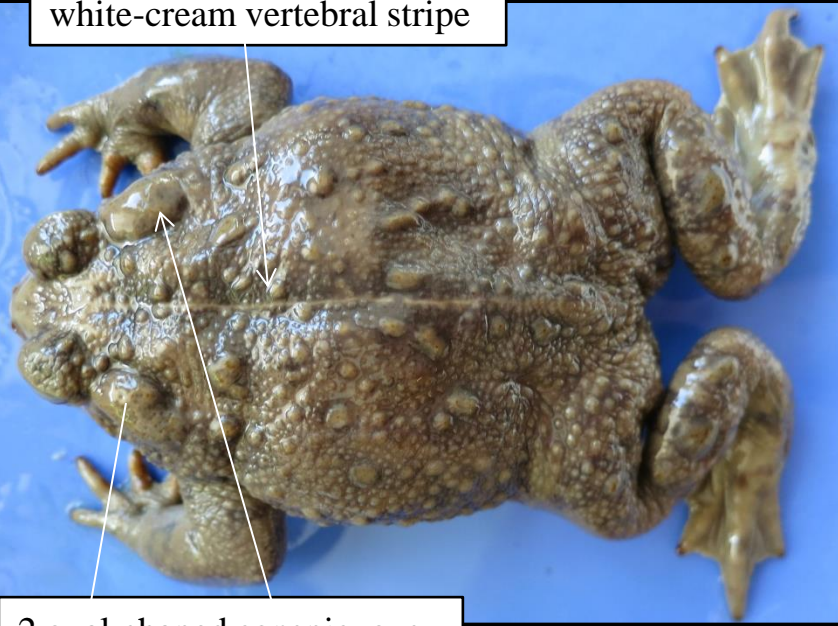






***Anaxyrus boreas* (formerly *Bufo boreas*) Western toad:** stout body, blunt head, broad waist, short legs, dry warty skin. **Color** Dorsal- Varies from gray to red-brown to yellow to olive-green. Ventral-pale, mottled with dark blotches.

white-cream vertebral stripe



2 oval-shaped conspicuous parotoid glands behind eyes

Adults: 2-5 inch length

Habitat: grasslands, forests, marshes. Breed in ponds or shallow lakes. Active at night.



eyes- gold flecked, with horizontal pupils



Each hind foot has a yellow rounded knob (tubercle) on underside. Aids in digging, allowing the ability to bury itself in dirt to avoid predators.



***Chrysemys picta* Painted turtle.** Key ID features: medium-sized aquatic turtle with dark colored carapace (upper shell) and bright red markings on the lower shell and underside marginal edges of carapace. Yellow lines on head, legs, and tail. Colorful markings usually visible on basking turtles.



Photo: John Sullivan <http://www.wildherps.com>



***Chrysemys picta* Painted turtle.** Key ID features: medium-sized aquatic turtle with dark colored carapace (upper shell) and bright red markings on the lower shell and underside marginal edges of carapace. Yellow lines on head, legs, and tail. Colorful markings usually visible on basking turtles.



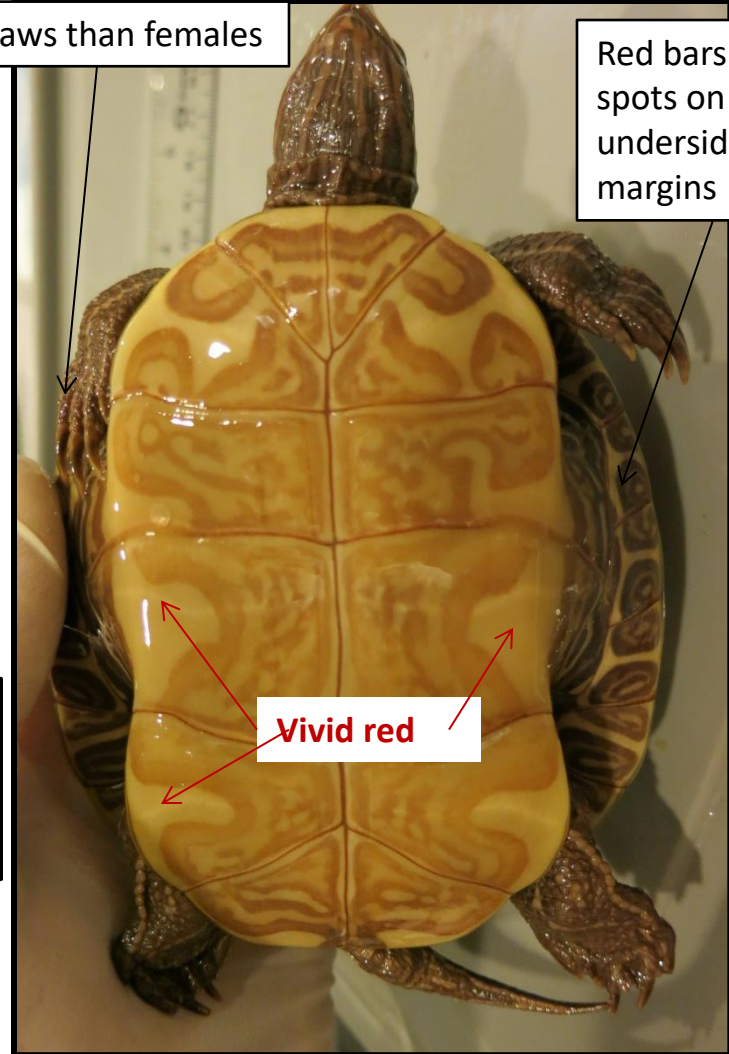
Males have longer front claws than females

Red bars or spots on underside margins

Vivid red

carapace: olive dark brown, or black relatively smooth

Photo: John Sullivan <http://www.wildherps.com/>





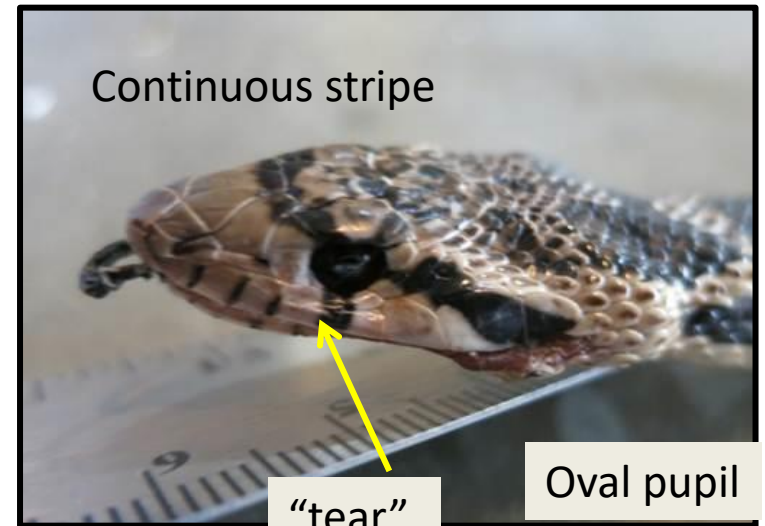
## *Pituophis c. catenifer* Pacific gopher snake

Key ID features: large, dark blotches, tail that tapers to the tip, distinct eye stripe. Defensive behavior mimics rattlesnake



Photo: Lisa Robinson

Male & Female, pre-mating behavior



Continuous stripe

"tear"

Oval pupil



Square dorsal spots

Banded tail

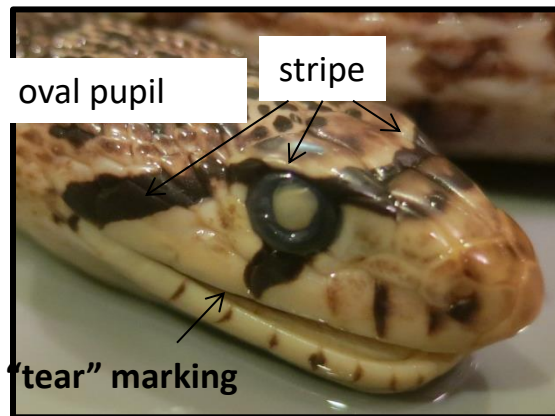
Somewhat triangular head



***Pituophis c. catenifer* Pacific gopher snake** Key ID features: large, dark blotches, tail that tapers to the tip, distinct eye stripe. Defensive behavior mimics rattlesnake



Keeled dorsal scales



Ventral side white, with black spots on edges





***Crotalus oreganus oreganus*** Northern Pacific rattlesnake Key ID features: heavy bodied with large dark spots, wide triangular head, distinct eye stripe, rattle at tail tip. Venomous. Cryptic coloration varies on habitat.



Bands on tail;  
rattle at tail tip



Ventral scales: white  
with dark blotches



Strongly  
keeled  
dorsal scales



Vertical pupil

Eye stripe

Heat sensitive pit



Photo: Lisa Robinson



***Plestiodon skiltonianus* (Formerly *Eumeces skiltonianus*) Western skink** Key ID features: small, slim, longitudinal striped lizard. Stripes extend from head onto the tail base. shiny scales, short legs, long bright blue tail in young, grades to blue-gray-brownish in older individuals.



Wide brown dorsal stripe with contrasting alternating light & dark stripes on either side.



Photo: John Sullivan

Forage for invertebrates during daytime, moving jerkily



Photos: John Sullivan <http://www.wildherps.com/>

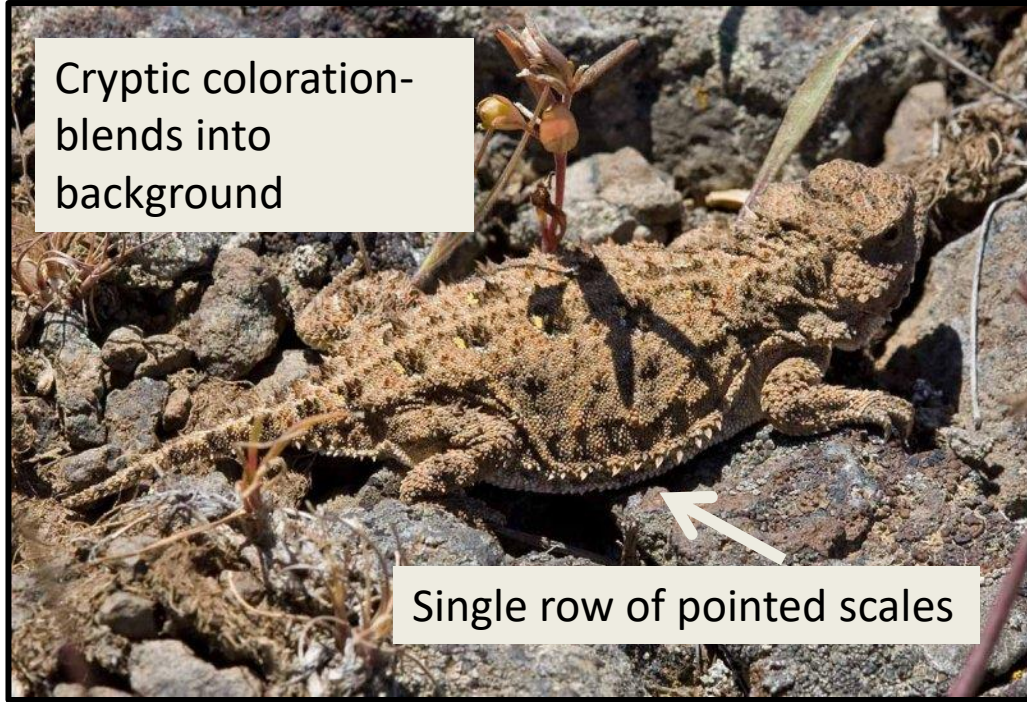
Tail length 1.5-2 x  
Body length

Ventral side: light in  
color, without  
markings

Uniformly smooth  
shiny scales



***Phrynosoma douglasii*** Pygmy short-horned lizard Key ID features:  
flat round body with single row of pointed fringe-like scales on each side.  
Spines or “horns” project from back of head. Toad-like in appearance- called  
“horned toad”



Cryptic coloration-  
blends into  
background

Single row of pointed scales



Short legs

Short  
triangular  
tail

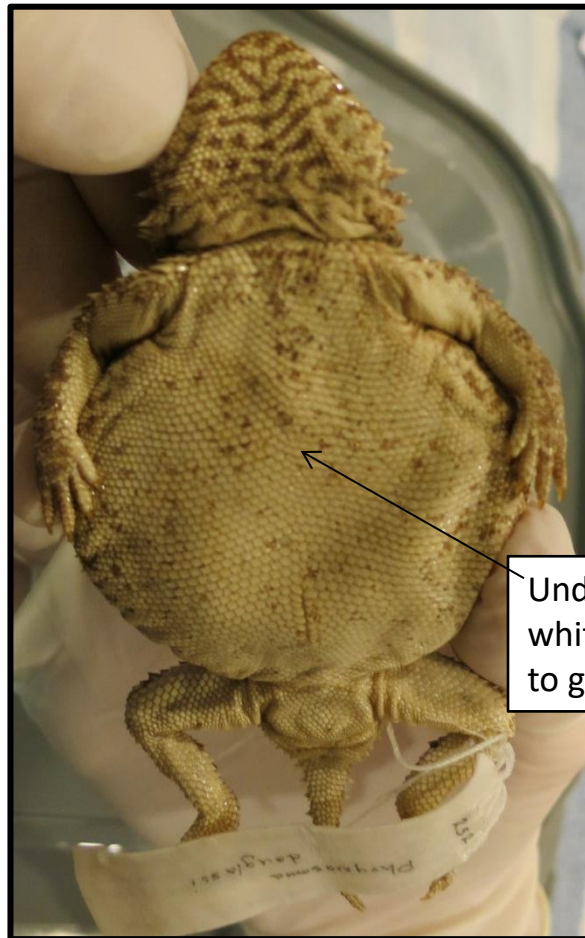


Blunt snout

Habitat: shrub-steppe with well-drained soils  
that allow burrowing below the surface. Also use  
Lithosols (thin rocky soils).

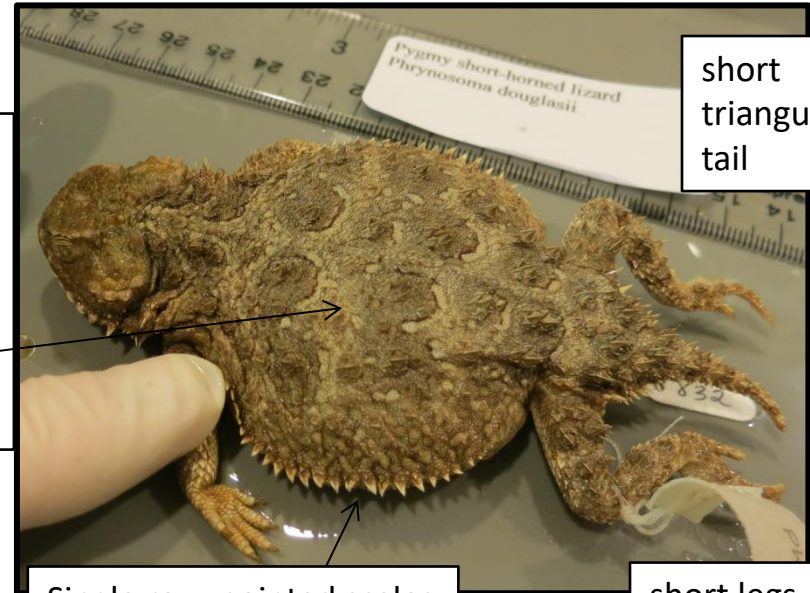


***Phrynosoma douglasii* Pygmy short-horned lizard** Key ID features: flat round body with single row of pointed fringe-like scales on each side. Spines or “horns” project from back of head. Toad-like in appearance—called “horned toad”



Cryptic coloration to blend into background mottled dorsal pattern

Underside white, or yellowish to gray.



short triangular tail

Single row, pointed scales

short legs



blunt snout

Habitat: shrub-steppe with well-drained soil that allows burrowing below the surface. Also use lithosols.



## ***Sceloporus occidentalis occidentalis*** Northwestern fence lizard

key ID features: keeled, spiny scales & two rows of light & dark markings on dorsal side. Color: some shade of gray or brown

Photos: Lisa Robinson



Female: blue patches faint or lacking



Male: Large blue patches on both sides of abdomen, and a blue throat patch (can be either solid or divided)

Posterior surface of hind legs is yellow-orange with keeled scales



Adult eating grasshopper

Dorsal scales are conspicuously free & pointed at back end

Up to 6.6 inches in length-nose to tail tip

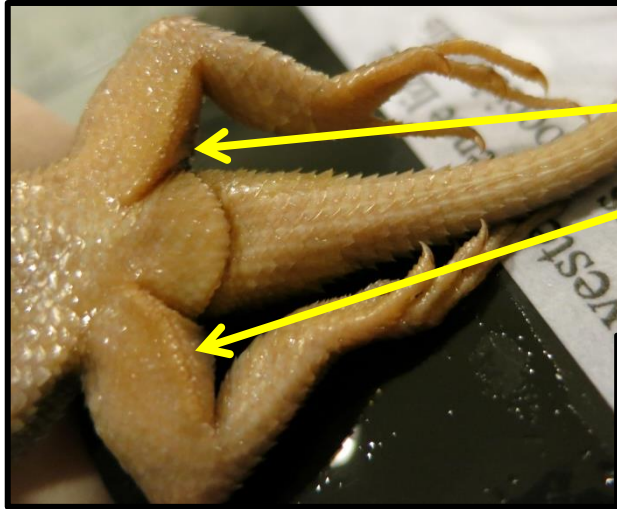


juvenile





***Sceloporus occidentalis* Northwestern fence lizard** Key ID features:  
keeled, spiny scales & two rows of light & dark markings on dorsal side.  
COLOR: some shade of gray or brown to almost black.

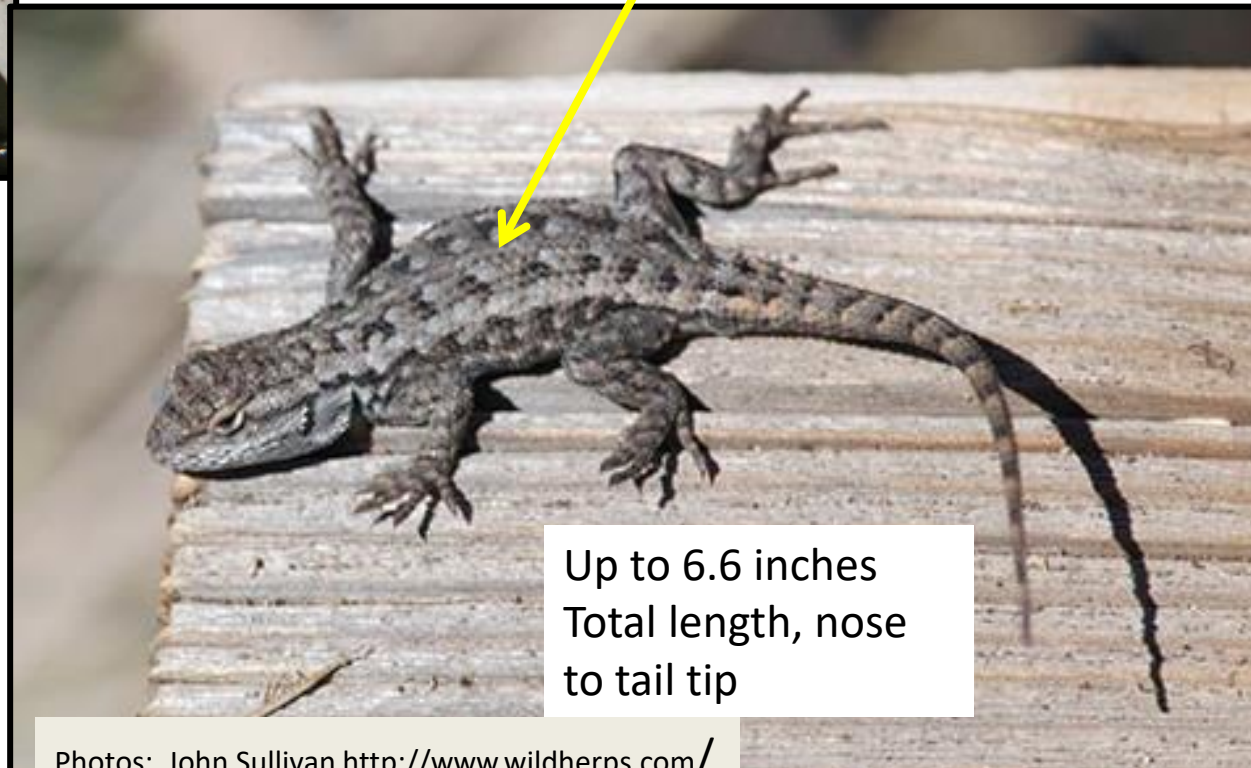


Posterior surface of  
hind legs yellow-orange  
with keeled scales

Dorsal scales are  
conspicuously free and  
pointed at back end



Blue throat  
patch:  
divided or  
solid. Faint  
or lacking in  
females



Up to 6.6 inches  
Total length, nose  
to tail tip



***Thamnophis sirtalis fitchi* Valley garter snake** (common garter snake) Key ID features: Typically 3 dorsal stripes, red blotches on sides of body above the lateral stripes. Red cheek blotch usually present. Good swimmers. COLOR: dorsal black body with yellow stripes, ventral body yellow or buff.



Note red blotches on side of body  
As key ID for valley garter snake



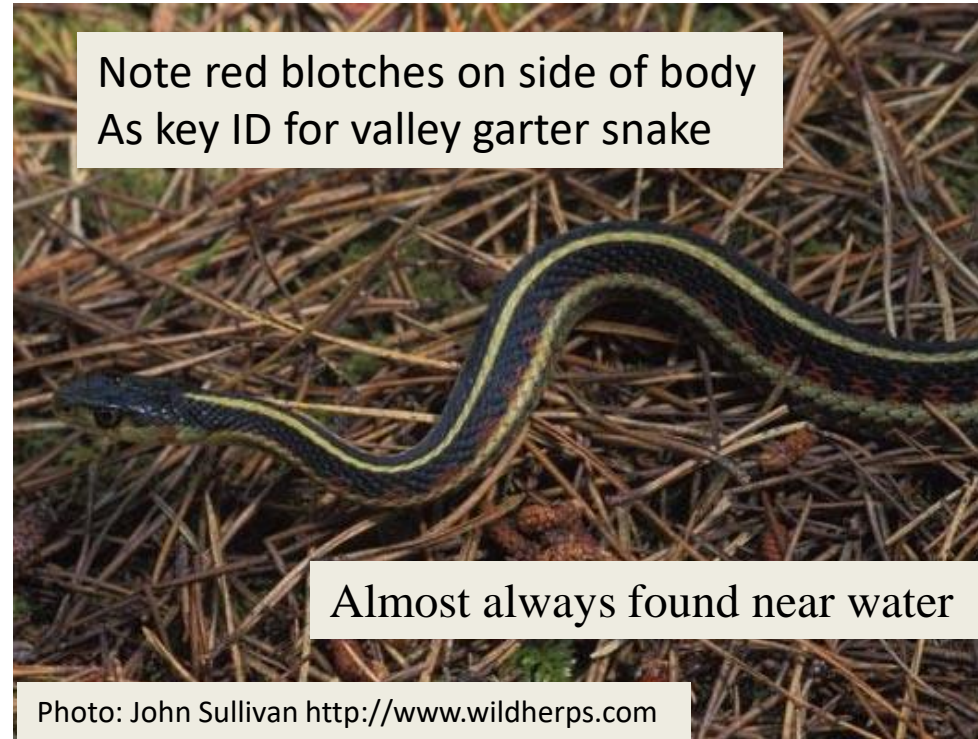
Swimming in Columbia River  
Photo: Lisa Robinson



Moving quickly out of the water & up  
the muddy bank into shrub cover  
along Columbia River



***Thamnophis sirtalis fitchi* Valley garter snake** (common garter snake) Key ID features: Typically 3 dorsal stripes, red blotches on sides of body above the lateral stripes. Red cheek blotch usually present. Good swimmers. COLOR: dorsal black body with yellow stripes, ventral body yellow or buff.



One of few vertebrates that can prey successfully on rough-skinned newts- active toxin found in their livers after predation.